

120/120 Plus Digital Weight Indicator



Standard Features

120

- Large .8" (20.3 mm) Light Emitting Diode (LED) Display
- Configurable analog to digital measurement rate
- Power for four 350Ω load cells
- Primary/secondary units configuration: lb, kg, ounces, grams
- 5-button operation
- Two independent communication ports: (1) full duplex, (1) unidirectional or active 20 mA current loop
- Standardized EDP command sets
- Programmable ticket format up to two 180-character printout
- Full front-panel digital calibration and configuration
- Tilt stand
- Three-stage digital filtering
- Consecutive transaction numbering
- Time and date (volatile)

120 Plus

- Large .8" LCD display with back light
- Powered with rechargeable battery or wall adapter
- Power save feature for 700 hours of battery life
- Two setpoints with delay and timer selections
- Three digital inputs
- Ten stored tare values
- Display hold (based on 3 second average)
- Body mass index (BMI) function
- Time and date (volatile)

Approvals



120 Plus - Approvals pending

Specifications

POWER:

Line voltages: 115 or 230 VAC
 Frequency: 50 or 60 Hz
 120 Plus Power consumption:
 (estimated battery life)
 60 hours with 1 x 350Ω
 40 hours with 4 x 350Ω
 Charge time 8 hours

EXCITATION VOLTAGE:

5 VDC,
 4 x 350Ω or 8 x 700Ω load cells

ANALOG SIGNAL INPUT RANGE:

-0.6 mV/V - 3.0 mV/V

ANALOG SIGNAL SENSITIVITY:

0.3 μV/graduation minimum,
 1.5 μV/grad recommended

RESOLUTION:

Internal resolution:
 1 million internal graduations
 Display resolution:
 10,000 displayed graduations

MEASUREMENT RATE:

30, 15, 7, 3 per second
 *30 per second

SYSTEM LINEARITY:

Within 0.01% of full scale

CIRCUIT PROTECTION:

RFI, EMI, ESD protected

SERIAL OUTPUT:

EDP port: Full duplex RS-232
 Printer port:
 Output-only RS-232 or active 20 mA
 current loop
 Both ports:
 9600, 4800, 2400, 1200, 600, 300
 bps; 7 or 8 data bits; even, odd or
 no parity

UPDATE RATE:

15 times/seconds

DISPLAY:

0.8" (20 mm), 6-digit Super Red
 Light Emitting Diode (LED) display,
 7-segment, digits
 *0.8" (20 mm) 6-digit LCD with
 backlight
 7-segment digits

STATUS ANNUNCIATORS:

Designators for: center of zero,
 stand still, gross, net center of zero,
 standstill, lb, kg, oz, g
 *Battery, setpoint 1 & 2 BMI, HI-OK-
 LO, Hold

KEYBOARD:

5-key flat membrane panel,
 tactile feel
 *zero, tare, present tare, hold, BMI,
 units, numeric 0-9, clear, enter

OPERATING TEMPERATURE:

-10°C to 40°C/14°F to 104°F (legal)
 -10°C to 50°C/14°F to 122°F
 (industrial)

WEIGHT:

2.6 lb (1.2 kg)

RATING/MATERIAL:

Enclosure: heavy gauge ABS

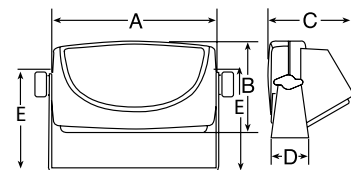
APPROVALS:

NTEP -6,000 Divisions,
 Class III/IIIL, CC# 03-059;
 Measurement Canada AM-5517,
 Class III/IIILD at 6,000 Divisions;
 OIML approved, TC 7072; T 5692
 at 5,000 Divisions
 CE marked

120 Plus - Approvals pending

WARRANTY:

One-year limited warranty



DIMENSIONS

A = 7.32" (1863 mm) C = 3.74" (95 mm)
 B = 6.06" (154 mm) D = 1.65" (42 mm)
 E = 4.76" (121 mm)

*Specifications apply to the 120