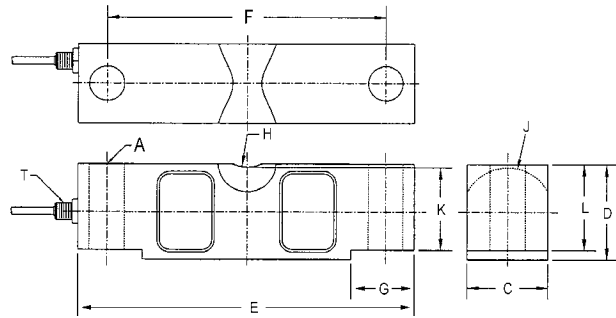


RL75058 Double-Ended Beam, Alloy Steel, NTEP 1:10,000 Class IIIIL Multiple Cell, IP67



Picture is a representation of actual product



SPECIFICATIONS

Full Scale Output: 3.0mV/V	Safe Overload: 150% Full scale	Insulation Resistance: 5000 megohms	Cable Coloring: Red..... + Excitation Black..... - Excitation Green..... + Signal White..... - Signal
Output Resistance: 700 ohms, +/- 5	Safe Sideload: 100% Full scale	Seal Type: Environmentally sealed, IP67	Warranty: Two-year limited warranty
Input Resistance: 770 ohms, +/- 10	Rated Excitation: 10V DC (15V maximum)	Cable Length: 35'/10.6 m	Approvals: FM APPROVED IP67 CE
Material/Finish: High-alloy steel, nickel plated	Nonlinearity: 0.03% Full scale	Cable Diameter: .200 polyurethane jacket 10 k-25 k .035 polyurethane jacket 40 k-125 k	
Temperature: Compensated range 14°F to 104°F/-10°C to 40°C	Hysteresis: 0.02% Full scale		

DIMENSIONS

RATED CAPACITY	A	C	D	E	F	G	H	J	K	L	T
lb/inches											
10,000-25,000	.68	1.69	1.94	7.75	6.50	1.38	.75	.90	1.63	1.70	1/4-18NPT
40,000	.81	1.94	2.44	10.25	8.50	1.93	1.00	1.12	2.00	2.10	1/4-18NPT
50,000-75,000	1.06	2.44	2.94	10.25	8.50	1.93	1.00	1.37	2.54	2.65	1/2-14NPT
100,000-125,000	1.62	2.90	3.86	15.25	12.75	3.13	1.50	1.80	3.30	3.43	1/2-14NPT
kg/mm											
4536.1-11,339.8	17.3	42.9	49.3	196.9	165.1	35.1	19.1	22.9	41.4	43.2	1/4-18NPT
18,143.7	20.6	49.3	62.0	260.4	215.9	49.0	25.4	28.5	50.8	53.3	1/4-18NPT
22,679.6-34,019.4	26.9	62.0	74.7	260.4	215.9	49.0	25.4	34.8	64.5	67.3	1/2-14NPT
45,359.4-56,699.1	41.2	737	980	387.4	323.9	79.5	38.1	45.7	83.8	87.1	1/2-14NPT

ORDER INFORMATION

LOAD RATING		PART #	PRICE
NTEP 1:10,000			
20,000 lb	(9071.9 kg)	34314	Consult
25,000 lb	(11,339.8 kg)	34315	Consult
40,000 lb	(18,143.7 kg)	34316	Consult
50,000 lb	(22,679.6 kg)	34317	Consult
60,000 lb	(27,215.5 kg)	34318	Consult
75,000 lb	(34,019.4 kg)	34319	Consult
100,000 lb	(45,359.4 kg)	34320	Consult
125,000 lb	(56,699.1 kg)	34321	Consult
Non-NTEP			
10,000 lb	(4536.0 kg)	41890	Consult
60' Cables			
50,000 lb	(22,679.6 kg)	53417	Consult
75,000 lb	(34,019.4 kg)	39516	Consult
*75,000 lb	(34,019.4 kg)	73839	Consult
125,000 lb	(45,359.4 kg)	96944	Consult
100' Cable			
75,000 lb	(34,019.4 kg)	74725	Consult

*Stainless steel overbraid cable

INTERCHANGEABLE PRODUCTS

MANUFACTURER	MODEL	PAGE #
VPG Sensortronics	65058	317
VPG Celtron	CLB	204

WEIGH MODULE AVAILABLE

MANUFACTURER	MODEL	PAGE #
Rice Lake Weighing Systems	2100HE	32
Rice Lake Weighing Systems	MVS	90
Rice Lake Weighing Systems	TSA	92

REPLACEMENT LOAD CELLS FOR RICE LAKE COIL SCALE

LOAD RATING	PART #	PRICE
20,000	121439	Consult
25,000	121440	Consult
40,000	121441	Consult
50,000	121442	Consult
60,000	121443	Consult
75,000	121444	Consult

RICE LAKE WEIGHING SYSTEMS