

RL50210 TA 50-500 lb Capacity Mini Tank Weighing Module



Available in configurations with three or four mounting assemblies.
Picture is a representation of actual product

The RL50210 TA Weigh Module Kit provides a cost-effective alternative for your customers' low-range weighing needs. A variety of features makes this kit easy to install and an exceptional choice for various indoor weighing applications where checking requirements are low. Environmentally protected load cells, neoprene isolation/compression mounts and other Rice Lake Weighing Systems components are the keys to this module's outstanding performance.

Module with RL50210 or RL50210SS cantilever beam load cell; capacities (per module): 50 lb (22.7 kg), 100 lb (45.4 kg), 150 lb (68.0 kg) and 250 lb (113.4 kg). Refer to page 136 for load cell specifications. 500 lb model features RL30000 single-ended beam load cell; refer to page 119 for load cell specifications.



STANDARD FEATURES

- Zinc plated, mild steel modules
- Lower weighing ranges from 50-500 lb (22.7-226.8 kg) per module
- Environmentally protected load cells
- Neoprene isolation/compression mounts allow for minor misalignment, thermal expansion and shock absorption
- Overload stop for 500 lb (226.8 kg) modules provides durability

APPLICATIONS

- Small tanks and hoppers
- Conveyor/in-motion weighing
- Small platform scales where minor shock loading may be a problem

OPTIONAL FEATURES

- Stainless steel modules available in 50, 100, 150, 250 and 500 lb (22.7, 45.4, 68.0, 113.4, 226.8 kg) capacity with RL50210SS, RL50210SS and RL39123 stainless steel load cells or Vishay Sensortronics 65023 SS load cells
- 65059 kits available with Vishay Sensortronics 60040 load cells, capacities: 50-250 lb (22.7-113.4 kg) or 65023 load cells, capacity: 500 lb (226.8 kg)

COMPLETE KIT INCLUDES

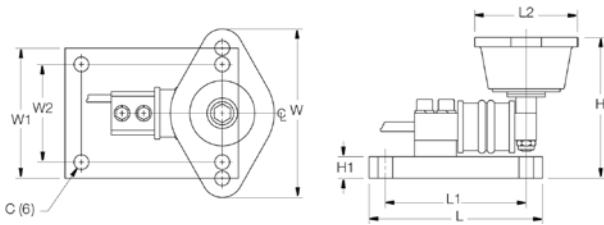
- 1 JB4SS NEMA 4X stainless steel signal trim junction box
- 3 or 4 RL50210 cantilever beam load cells (50-250 lb models) (see page 136)
- 3 or 4 RL30000 single-ended beam load cells (500 lb models) (see page 119)
- 3 or 4 neoprene isolation/compression mounts
- 25' of our Hostile Environment EL147HE SURVIVOR® load cell cable

LOAD CELL CERTIFICATIONS

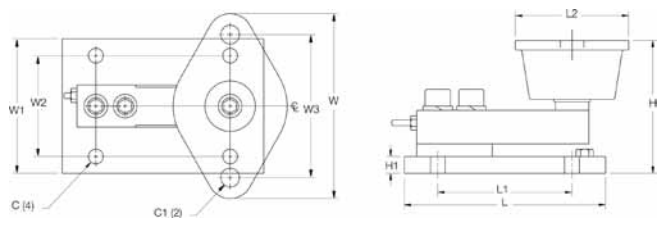


Rice Lake model only, not stainless steel models

RL50210 TA 50-500 lb Capacity Mini Tank Weighing Module



50-250 lb (22.7-113.4 kg)



500 lb (226.8 kg)

DIMENSIONS

RATED CAPACITY	C	C1	H	H1	L	L1	L2	W	W1	W2	W3
lb/inches											
50-250	.34	—	3.13	.50	4.00	3.25	2.38	3.88	3.00	2.25	—
500	.44	.56	3.88	.50	6.00	4.00	3.38	5.50	4.00	3.00	4.13
kg/mm											
22.7-113.4	8.6	—	79.5	12.7	101.6	82.6	60.5	98.6	76.2	57.2	—
226.8	11.2	14.2	98.6	12.7	152.4	101.6	85.9	139.7	101.6	76.2	104.9

ORDER INFORMATION

*LOAD RATING (LOAD CELL CAPACITY)	PART #	PRICE
Mild Steel Single Module (Includes Load Cell)		
50 lb (22.7 kg)	17844	Consult
100 lb (45.4 kg)	17845	Consult
150 lb (68.0 kg)	17846	Consult
250 lb (113.4 kg)	17847	Consult
500 lb (226.8 kg)	17848	Consult
Mild Steel 3-Module Kit		
50 lb (22.7 kg)	18051	Consult
100 lb (45.4 kg)	18052	Consult
150 lb (68.0 kg)	18053	Consult
250 lb (113.4 kg)	18054	Consult
500 lb (226.8 kg)	18055	Consult
Mild Steel 4-Module Kit		
50 lb (22.7 kg)	18057	Consult
100 lb (45.4 kg)	18058	Consult
150 lb (68.0 kg)	18059	Consult
250 lb (113.4 kg)	18060	Consult
500 lb (226.8 kg)	18061	Consult
Stainless Steel Single Module (Includes Load Cell)		
50 lb (22.7 kg)	63033	Consult
100 lb (45.4 kg)	63034	Consult
150 lb (68.0 kg)	63035	Consult
250 lb (113.4 kg)	63036	Consult
500 lb (226.8 kg)	17954	Consult
Stainless Steel 3-Module Kit		
500 lb (226.8 kg)	30394	Consult
Stainless Steel 4-Module Kit		
500 lb (226.8 kg)	30393	Consult

ORDER INFORMATION

*LOAD RATING (LOAD CELL CAPACITY)	PART #	PRICE
Mild Steel Single Module (Includes Load Cell)		
50 lb (22.7 kg)	17825	Consult
100 lb (45.4 kg)	17826	Consult
150 lb (68.0 kg)	17827	Consult
250 lb (113.4 kg)	17828	Consult
500 lb (226.8 kg)	17829	Consult
Mild Steel 3-Module Kit		
50 lb (22.7 kg)	18063	Consult
100 lb (45.4 kg)	18064	Consult
150 lb (68.0 kg)	18065	Consult
250 lb (113.4 kg)	18066	Consult
500 lb (226.8 kg)	18067	Consult
Mild Steel 4-Module Kit		
50 lb (22.7 kg)	18069	Consult
100 lb (45.4 kg)	18070	Consult
150 lb (68.0 kg)	18071	Consult
250 lb (113.4 kg)	18072	Consult
500 lb (226.8 kg)	18073	Consult
Stainless Steel Single Module (Includes Load Cell)		
500 lb (226.8 kg)	17950	Consult
Stainless Steel 3-Module Kit		
500 lb (226.8 kg)	30392	Consult
Stainless Steel 4-Module Kit		
500 lb (226.8 kg)	30391	Consult

* Load Rating is per module

WEIGH MODULES