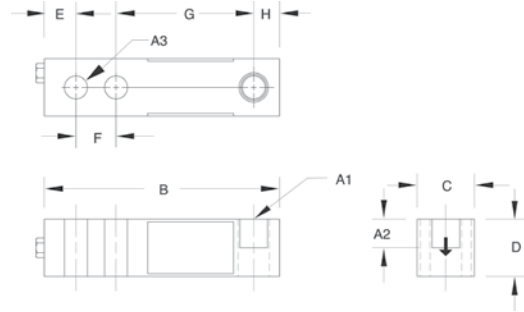





RL30000 Threaded Hole Single-Ended Beam, Alloy Steel, NTEP 1:5000 III L Class III Multiple Cell, IP67



Picture is a representation of actual product



SPECIFICATIONS

<p>Full Scale Output: 3.0 mV/V</p> <p>Bridge Resistance: 350 ohms, nominal</p> <p>Material/Finish: High-alloy steel, nickel plated</p> <p>Temperature: Compensated range 14°F to 104°F/-10°C to 40°C</p> <p>Seal Type: Environmentally sealed, IP67</p>	<p>Safe Overload: 150% Full scale</p> <p>Safe Sideload: 100% Full scale</p> <p>Rated Excitation: 10V DC (15V maximum)</p> <p>Nonlinearity: 0.03% Full scale</p> <p>Hysteresis: 0.02% Full scale</p>	<p>Insulation Resistance: 5000 megohms</p> <p>Deflection at Capacity: 250-1000 lb = .013"/.33 mm, 2000-3000 lb = .015"/.38 mm, 4000-5000 lb = .025"/.64 mm, 10,000 lb = .032"/.81 mm, 15,000-20,000 lb = .038"/.97 mm</p> <p>Cable Length: 20'/6.1 m</p> <p>Cable Diameter: 200 polyurethane jacket</p>	<p>Cable Color Code: Red..... + Excitation Black..... - Excitation Green..... + Signal White..... - Signal</p> <p>Warranty: Two-year limited warranty</p> <p>Approvals:    Except 250 lb</p>
--	--	---	--

DIMENSIONS

RATED CAPACITY	A1*	A2†	A3*	B	C	D	E	F	G	H
lb/inches										
250-5000 SE	1/2-20 UNF-2B	.60	.53	5.12	1.25	1.25	.62	1.00	3.00	.50
5000 LE-10,000	3/4-16 UNF-2B	.75	.78	6.75	1.50	1.50	.75	1.50	3.75	.75
20,000	1-12 UNF-2B	1.00	1.03	8.75	2.00	2.00	1.00	2.00	4.75	1.00
kg/mm										
113.4-2268 SE	1/2-20 UNF-2B	15.2	13.5	130.1	31.8	31.8	15.8	25.4	76.2	12.7
2268.0 LE-4535.9	3/4-16 UNF-2B	19.1	19.8	171.5	38.1	38.1	19.1	38.1	95.3	19.1
9071.9	1-12 UNF-2B	25.4	26.2	222.3	50.8	50.8	25.4	50.8	120.7	25.4

* Dimension A1 is identical to A3 on the RL30002 Thru-Hole Model. † Dimension A2 applies to RL30000 Threaded-Hole Model ONLY

ORDER INFORMATION

LOAD RATING	PART #	PRICE
RL30000 NTEP, Threaded-Hole Design		
1000 lb (453.6 kg)	21491	Consult
2000 lb (907.2 kg)	21493	Consult
2500 lb (1134.0 kg)	21495	Consult
3000 lb (1360.8 kg)	21497	Consult
4000 lb (1814.4 kg)	21498	Consult
5000 lb SE (2268.0 kg)	21500	Consult
5000 lb LE (2268.0 kg)	21501	Consult
10,000 lb (4535.9 kg)	21503	Consult
RL30000 Non-NTEP, Threaded-Hole Design		
250 lb (113.4 kg)	17341	Consult
500 lb (226.8 kg)	17342	Consult
20,000 lb (9071.9 kg)	17109	Consult
3/8-24 Nipple	31533*	Consult
3/8-24 to 1/4-18 NPT	31534	Consult

Conduit Adapter Kit* (must be factory installed to maintain warranty)
 * Parts #31533 and #31534 must be installed together to form the Conduit Adapter Kit.
 SE refers to small envelope.
 LE refers to large envelope.

INTERCHANGEABLE PRODUCTS

MANUFACTURER	MODEL	PAGE #
Threaded-Hole Design	—	—
VPG Revere Transducers	5123	270
VPG Tedeo-Huntleigh	3411	330
Artech®	30310	—

WEIGH MODULE AVAILABLE

MANUFACTURER	MODEL	PAGE #
Rice Lake Weighing Systems	RL50210 TA	136
Rice Lake Weighing Systems	RL1800 Series	54

RICE LAKE WEIGHING SYSTEMS