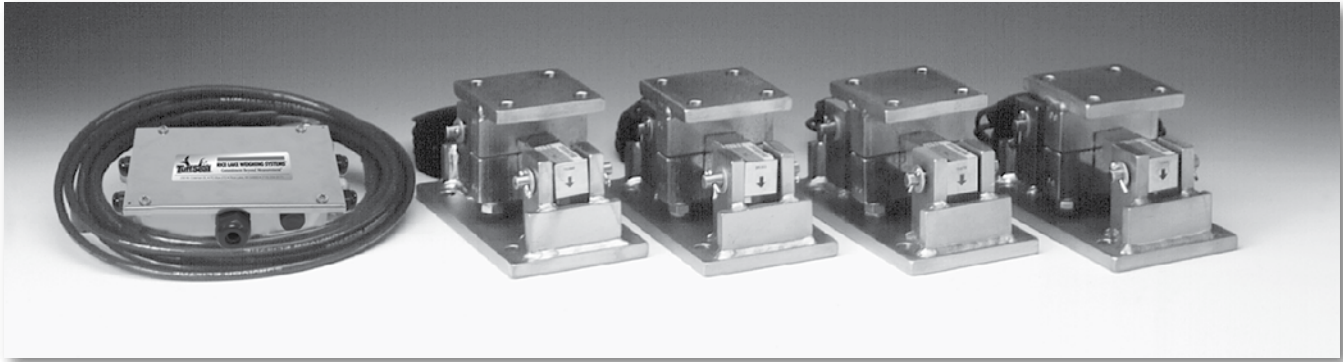


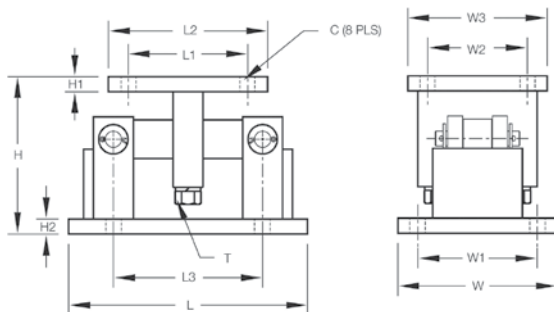
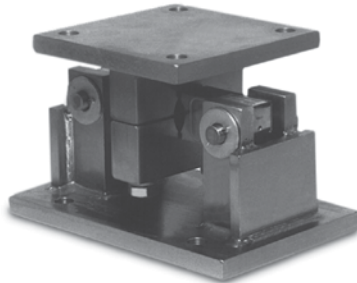
**RL1600 Series** Mild Steel



Available in configurations with three or four mounting assemblies.  
Picture is a representation of actual product

The RL1600 Series Mounting Module Kit utilizes several Rice Lake Weighing Systems components to provide an unmatched level of performance in tank and hopper weighing applications. The RL1600 Series kit is ideally suited for indoor and outdoor process control operations in the medium-to high-capacity ranges. Each module incorporates self-checking capabilities for thermal expansion and contraction.

Mild steel module with RL75016 double-ended beam load cell. Refer to page 149 for load cell specifications.



**DIMENSIONS**

RATED CAPACITY	C	H	H1	H2	L	L1	L2	L3	T	W	W1	W2	W3
<b>lb/inches</b>													
1000-5000	.56	5.00	.50	.50	9.25	2.75	4.00	6.25	1/2-13 UNC	5.00	3.75	2.75	4.00
10,000-25,000	.78	7.87	.75	.75	12.00	6.00	8.00	7.50	3/4-10 UNC	8.00	6.00	6.00	8.00
50,000-75,000	.78	9.31	1.00	1.00	16.25	6.50	9.00	11.50	1 1/4-7 UNC	12.00	9.50	6.50	9.00
<b>kg/mm</b>													
453.6-2268.0	14.2	127.0	12.7	12.7	235.0	69.9	101.6	158.8	1/2-13 UNC	127.0	95.3	69.9	101.6
4535.9-11,339.8	19.8	199.9	19.1	19.1	304.8	152.4	203.2	190.5	3/4-10 UNC	203.2	152.4	152.4	203.2
22,679.7-34,019.5	19.8	236.5	25.4	25.4	412.8	165.1	228.6	292.1	1 1/4-7 UNC	304.8	241.3	165.1	228.6

**COMPLETE KIT INCLUDES**

- 1 JB4SS NEMA 4X stainless steel signal trim junction box
- 3 or 4 RL1600 mild steel compression mounts
- 3 or 4 RL75016 double-ended shear beam load cells (see page 149)
- 25' of our Hostile Environment EL147HE SURVIVOR® load cell cable

**APPLICATIONS**

- Medium-to heavy-capacity tanks, bins and hoppers
- Bulk material management

**STANDARD FEATURES**

- Capacities (per module): 1000-75,000 lb (453.6-34,019.5 kg)
- Self-checking, easy-to-use design allows module to be bolted directly to tank leg without requiring additional mounting plates or load buttons
- Environmentally protected load cells
- Double-ended shear beam design, center loaded
- Painted mild steel construction

**OPTIONAL FEATURES**

- Kits available with Vishay Sencortronics 65016 load cells, capacities (per module): 1000-75,000 lb (453.6-34,019.5 kg)

**LOAD CELL CERTIFICATIONS**



## RL1600 Series Mild Steel

### ORDER INFORMATION

LOAD RATING (PER MODULE)		PART #	PRICE
<b>Single Module (Does NOT Include Load Cell)</b>			
1000-5000 lb	(453.6-2268.0 kg)	17812	Consult
10,000-25,000 lb	(4535.9-11,339.8 kg)	17814	Consult
50,000 lb	(22,679.6 kg)	17816	Consult
75,000 lb	(34,019.5 kg)	25346	Consult
<b>3-Module Kit</b>			
1000 lb	(453.6 kg)	18117	Consult
1500 lb	(680.4 kg)	18118	Consult
2000 lb	(907.2 kg)	18119	Consult
2500 lb	(1134.0 kg)	18120	Consult
3000 lb	(1360.8 kg)	18121	Consult
5000 lb	(2268.0 kg)	18122	Consult
10,000 lb	(4535.9 kg)	18123	Consult
15,000 lb	(6803.9 kg)	18124	Consult
20,000 lb	(9071.9 kg)	18125	Consult
25,000 lb	(11,339.8 kg)	18126	Consult
50,000 lb	(22,679.6 kg)	18127	Consult
75,000 lb	(34,019.5 kg)	25348	Consult
<b>4-Module Kit</b>			
1000 lb	(453.6 kg)	18129	Consult
1500 lb	(680.4 kg)	18130	Consult
2000 lb	(907.2 kg)	18131	Consult
2500 lb	(1134.0 kg)	18132	Consult
3000 lb	(1360.8 kg)	18133	Consult
5000 lb	(2268.0 kg)	18134	Consult
10,000 lb	(4535.9 kg)	18135	Consult
15,000 lb	(6803.9 kg)	18136	Consult
20,000 lb	(9071.9 kg)	18137	Consult
25,000 lb	(11,339.8 kg)	18138	Consult
50,000 lb	(22,679.6 kg)	18139	Consult
75,000 lb	(34,019.5 kg)	25349	Consult

### VISHAY SENSORTRONICS 65016 ORDER INFORMATION

LOAD RATING (PER MODULE)		PART #	PRICE
<b>3-Module Kit</b>			
1000 lb	(453.6 kg)	18189	Consult
1500 lb	(680.4 kg)	18190	Consult
2500 lb	(1134.0 kg)	18192	Consult
5000 lb	(2268.0 kg)	18194	Consult
10,000 lb	(4535.9 kg)	18195	Consult
15,000 lb	(6803.9 kg)	18196	Consult
20,000 lb	(9071.9 kg)	18197	Consult
25,000 lb	(11,339.8 kg)	18198	Consult
50,000 lb	(22,679.6 kg)	18199	Consult
75,000 lb	(34,019.5 kg)	25350	Consult
<b>4-Module Kit</b>			
1000 lb	(453.6 kg)	18201	Consult
1500 lb	(680.4 kg)	18202	Consult
2500 lb	(1134.0 kg)	18204	Consult
5000 lb	(2268.0 kg)	18206	Consult
10,000 lb	(4535.9 kg)	18207	Consult
15,000 lb	(6803.9 kg)	18208	Consult
20,000 lb	(9071.9 kg)	18209	Consult
25,000 lb	(11,339.8 kg)	18210	Consult
50,000 lb	(22,679.6 kg)	18211	Consult
75,000 lb	(34,019.5 kg)	25351	Consult
<b>Dummy Load Cells</b>			
1000-5000 lb	(453.6-2268.0 kg)	18236	Consult
10,000-25,000 lb	(4535.9-11,339.8 kg)	18237	Consult
50,000 lb	(22,679.6 kg)	18238	Consult
<b>Equalizer Pads</b>			
1000 lb-5000 lb			Consult
10,000 lb-25,000 lb			Consult

### LOAD CELL UPGRADE

#### RL75016WHE STAINLESS HERMETIC LOAD CELLS

3 mount kits 1k-5k \$390.00, 10k-25k \$435.00 added to list price

4 mount kits 1k-5k \$520.00, 10k-25k \$580.00 added to list price

*Applies to cast iron and mild steel kits.*