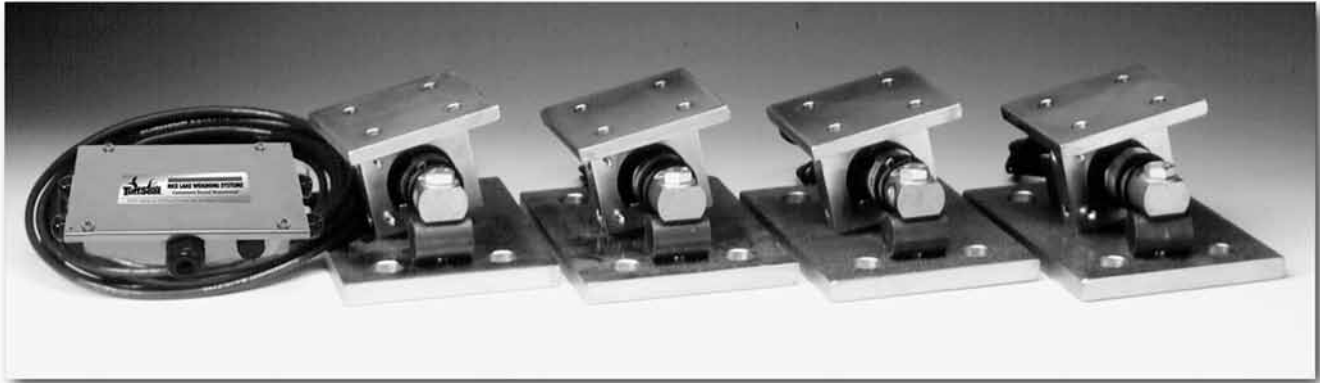


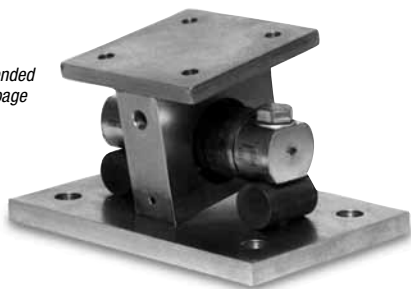
EZ Mount 1 Mild Steel



Available in configurations with three or four mounting assemblies.

Picture is a representation of actual product

The EZ Mount 1 Series weigh modules utilize the double-ended beam design with an articulating top plate to provide superior accuracy in any loading condition. The double-ended beam design means there is less cumbersome hardware and each module has a lower profile than modules of different configurations. NTEP Certified and FM approved RL70000 Series load cells give you accuracy and dependability in many applications, including intrinsically safe and explosion proof areas.



Module with RL70000 double-ended shear beam load cell. Refer to page 145 for load cell specifications.

COMPLETE KIT INCLUDES

- 1 JB4SS NEMA 4X stainless steel signal trim junction box
- 3 or 4 EZ Mount 1 mild steel compression mounts
- 3 or 4 RL70000 double-ended shear beam load cells (see page 145)
- 25' of our Hostile Environment EL147HE SURVIVOR® load cell cable

APPLICATIONS

- Medium-to heavy-capacity tank and hopper weighing applications

STANDARD FEATURES

- Capacities (per module): 5000-250,000 lb (2268-113,398.1 kg)
- NTEP Certified load cells
- Unique sliding pin design compensates for thermal expansion/contraction
- Self-checking
- Easy load cell replacement
- Simplified design allows bolting directly to tank and floor
- Center-loaded double-ended shear beam design
- Low-profile design
- Painted mild steel construction

OPTIONAL FEATURES

- Kits available with Revere Transducers 5103 load cell, capacities in 5000-150,000 lb (2268.0-68,039.0 kg)

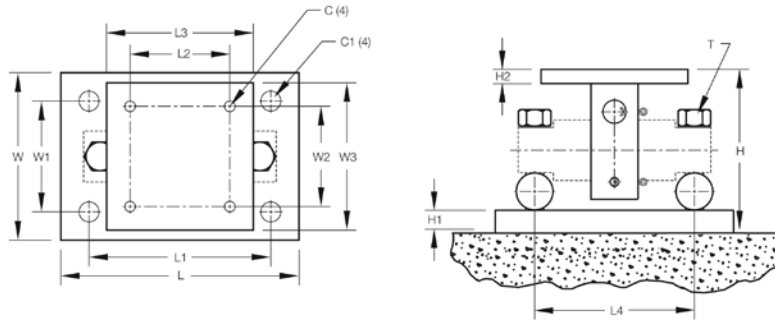
LOAD CELL CERTIFICATIONS



Rice Lake load cells only

NOTE: Check with your local weights & measure officials for suitability in Legal-For-Trade applications.

EZ Mount 1 Mild Steel



DIMENSIONS

| RATED CAPACITY | C | C1 | H | H1 | H2 | L | L1 | L2 | L3 | L4 | T | W | W1 | W2 | W3 |
|--------------------|------|------|-------|------|------|-------|-------|-------|-------|-------|--------------|-------|-------|-------|-------|
| lb/inches | | | | | | | | | | | | | | | |
| 5000-20,000 | .56 | 1.06 | 5.31 | .75 | .50 | 11.00 | 8.00 | 3.00 | 6.00 | 6.87 | 5/8-18 UNF | 7.50 | 4.00 | 3.00 | 6.00 |
| 30,000-60,000 | .68 | 1.19 | 8.43 | 1.00 | .75 | 15.00 | 11.50 | 5.12 | 8.00 | 8.50 | 1-14 UNS | 10.00 | 6.00 | 5.12 | 8.00 |
| 100,000 | .81 | 1.38 | 10.37 | 1.25 | 1.25 | 18.00 | 14.00 | 7.50 | 10.00 | 9.50 | 1-14 UNS | 12.00 | 9.00 | 7.50 | 10.00 |
| 150,000 | .81 | 1.38 | 10.37 | 1.25 | 1.25 | 18.00 | 14.00 | 7.50 | 10.00 | 9.50 | 1-14 UNS | 12.00 | 9.00 | 7.50 | 10.00 |
| 200,000-250,000 | 1.06 | 1.88 | 16.75 | 2.00 | 2.00 | 26.00 | 20.00 | 9.00 | 12.00 | 13.00 | 1 1/2-12 UNS | 12.00 | 6.00 | 9.00 | 12.00 |
| kg/mm | | | | | | | | | | | | | | | |
| 2268.0-9071.9 | 14.2 | 26.9 | 134.9 | 19.1 | 12.7 | 279.4 | 203.2 | 76.2 | 152.4 | 174.5 | 5/8-18 UNF | 190.5 | 101.6 | 76.2 | 152.4 |
| 13,607.8-27,215.5 | 17.3 | 30.2 | 214.1 | 25.4 | 19.1 | 381.0 | 292.1 | 130.0 | 203.2 | 215.9 | 1-14 UNS | 254.0 | 152.4 | 130.1 | 203.2 |
| 45,359.2 | 20.6 | 35.1 | 263.4 | 31.8 | 31.8 | 457.2 | 355.6 | 190.5 | 254.0 | 241.3 | 1-14 UNS | 304.8 | 228.6 | 190.5 | 254.0 |
| 68,039.0 | 20.6 | 35.1 | 263.4 | 31.8 | 31.8 | 457.2 | 355.6 | 190.5 | 254.0 | 241.3 | 1-14 UNS | 304.8 | 228.6 | 190.5 | 254.0 |
| 90,718.5-113,398.1 | 26.9 | 47.8 | 425.5 | 50.8 | 50.8 | 660.4 | 508.0 | 228.6 | 304.8 | 330.2 | 1 1/2-12 UNS | 304.8 | 152.4 | 228.6 | 304.8 |

EZ MOUNT 1 MILD STEEL ORDER INFORMATION

| LOAD RATING (PER MODULE) | PART # | PRICE |
|---|--------|---------|
| Single Module (Does NOT Include Load Cell) | | |
| 5000-20,000 lb (2268.0-9071.9 kg) | 17823 | Consult |
| 30,000-60,000 lb (13,607.8-27,215.5 kg) | 17824 | Consult |
| 100,000 lb (45,359.2 kg) | 17850 | Consult |
| 150,000 lb (68,039.0 kg) | 29012 | Consult |
| 200,000-250,000 lb (90,719-113,398.4 kg) | 26068 | Consult |
| 3-Module Kit | | |
| 5000 lb (2268.0 kg) | 18163 | Consult |
| 10,000 lb (4535.9 kg) | 18164 | Consult |
| 20,000 lb (9071.9 kg) | 18165 | Consult |
| 30,000 lb (13,607.8 kg) | 32164 | Consult |
| 40,000 lb (18,143.7 kg) | 32167 | Consult |
| 50,000 lb (22,679.6 kg) | 18166 | Consult |
| 60,000 lb (27,215.5 kg) | 18167 | Consult |
| 100,000 lb (45,359.2 kg) | 18168 | Consult |
| 150,000 lb (68,040 kg) | 43290 | Consult |
| 4-Module Kit | | |
| 5000 lb (2268.0 kg) | 18169 | Consult |
| 10,000 lb (4535.9 kg) | 18170 | Consult |
| 20,000 lb (9071.9 kg) | 18171 | Consult |
| 30,000 lb (13,607.8 kg) | 32165 | Consult |
| 40,000 lb (18,143.7 kg) | 32166 | Consult |
| 50,000 lb (22,679.6 kg) | 18172 | Consult |
| 60,000 lb (27,215.5 kg) | 18173 | Consult |
| 100,000 lb (45,359.2 kg) | 18174 | Consult |
| 150,000 lb (68,040 kg) | 43291 | Consult |

RTI EZ MOUNT 1 MILD STEEL ORDER INFORMATION

| LOAD RATING (PER MODULE) | PART # | PRICE |
|--------------------------|---|---------|
| 3-Module Kit | | |
| 5000 lb (2268.0 kg) | 18175 | Consult |
| 10,000 lb (4535.9 kg) | 18176 | Consult |
| 20,000 lb (9071.9 kg) | 18177 | Consult |
| 30,000 lb (13,607.8 kg) | 32169 | Consult |
| 40,000 lb (18,143.7 kg) | 32171 | Consult |
| 50,000 lb (22,679.6 kg) | 18178 | Consult |
| 60,000 lb (27,215.5 kg) | 18179 | Consult |
| 100,000 lb (45,359.2 kg) | 18180 | Consult |
| 150,000 lb (68,039.0 kg) | 18181 | Consult |
| 4-Module Kit | | |
| 5000 lb (2268.0 kg) | 18182 | Consult |
| 10,000 lb (4535.9 kg) | 18183 | Consult |
| 20,000 lb (9071.9 kg) | 18184 | Consult |
| 30,000 lb (13,607.8 kg) | 32170 | Consult |
| 40,000 lb (18,143.7 kg) | 32172 | Consult |
| 50,000 lb (22,679.6 kg) | 18185 | Consult |
| 60,000 lb (27,215.5 kg) | 18186 | Consult |
| 100,000 lb (45,359.2 kg) | 18187 | Consult |
| 150,000 lb (68,039.0 kg) | 18188 | Consult |
| Dummy Load Cells | | |
| 5000-20,000 lb | 33749 | Consult |
| 30,000-60,000 lb | 74016 | Consult |
| 100,000 lb | 94175 | Consult |
| Grounding Kit | | |
| 126419 | 5K-60K, includes ground strap and mounting hardware | Consult |