

The Massload ML0700 Tension Link Dynamometer is ideally suited for any application that involves lifting, pulling or winching. Tension Link Dynamometers are available in capacities ranging from 10,000 pounds to over 250,000 pounds. Custom capacities, sizes and safety factors are also available upon request.

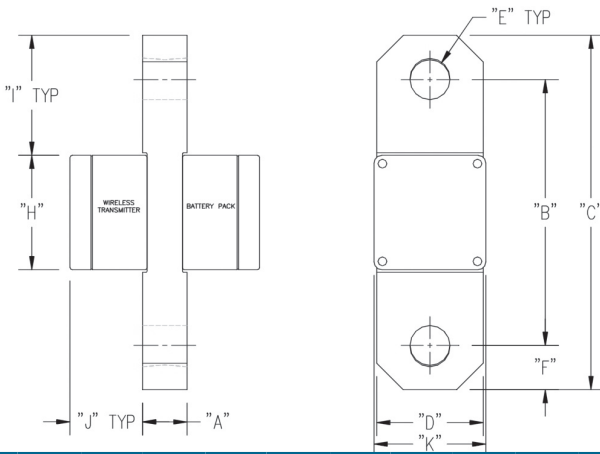
Each cell is temperature compensated and completely environmentally protected. The sealing standard of IP67 means the link is protected against high pressure jets of water (weather proof).

Also available as Wireless Tension Links that have a battery life of 200+ hours (continuous use) and go into sleep mode when not in use to prolong battery life. Wireless range is 100-150 feet line of sight and the antenna and batteries are enclosed in protective boxes on the link.



Remember...all tension links can be wireless!

Technical Data



Performance Specifications:

- Capacities..... 10,000 to 250,000 lbs
- Non Linearity..... <.03% Full Scale
- Safe Overload 200%
- Ultimate Overload..... 400%
- Full Scale Output..... 2 mv/v Nominal
- Maximum Excitation 15 volts DC
- Operating Temp..... -50C to +80C
- Compensated Temp..... -10C to +40C
- Thermal Zero Shift..... 0.00155 FS/deg. F
- Material..... Nickel Plated Alloy Steel
- Bridge Resistance..... 350 Ohm
- Sealing Standard..... IP67

Capacity	All Tension Links												Wireless Only							
	A		B		C		D		E		F		H		I		J		K	
	in	mm	in	mm	in	mm	in	mm	in	mm	in	mm	in	mm	in	mm	in	mm	in	mm
10k	1.25	32	7.5	191	10.00	254	3.00	76	1.13	29	1.25	32	3.23	82	3.39	86	2.05	52	3.15	80
25k	1.25	32	7.75	197	11.00	279	3.00	76	1.63	41	1.63	41	3.23	82	3.89	99	2.05	52	3.15	80
50k	1.63	41	8.50	215	12.75	334	3.63	92	2.13	54	2.13	54	3.15	80	4.80	122	2.05	52	3.28	83
75k	1.88	46	9.37	236	14.25	362	4.50	114	2.38	60	2.44	62	3.15	80	5.55	141	2.17	55	3.28	83
100k	1.94	49	9.38	236	14.75	375	5.00	127	2.38	60	2.69	68	3.15	80	5.80	147	2.17	55	3.28	83
150k	2.44	62	11.00	279	17.50	445	6.75	171	2.88	73	3.25	83	3.15	80	7.18	182	2.17	55	3.28	83
200k	2.97	75	11	279	19.5	495	7.44	189	3.38	86	4.25	108	3.15	80	8.14	207	2.17	55	3.28	83
250k	2.94	75	18.38	467	22.38	568	8.5	216	3.88	99	4.38	111	3.15	80	9.58	243	2.17	55	3.28	83

