

www.massload.com www.massload.com www.massload.com www.massload.com www.massload.com  
**ML500 Double Ended Shearbeam**

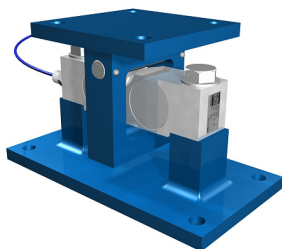
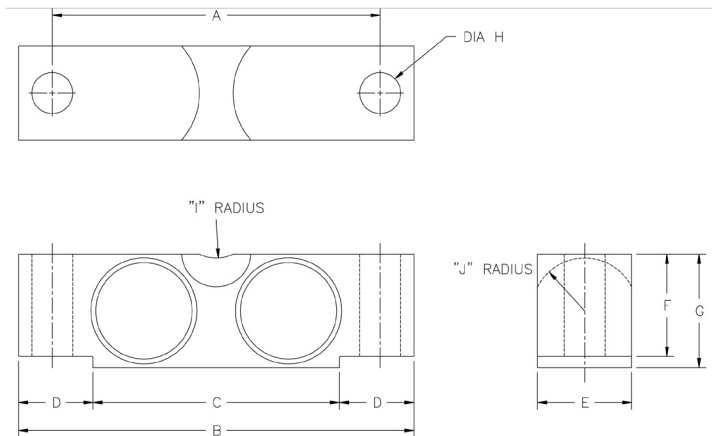


- 25,000 lbs (12,000 kg)
- 50,000 lbs (23,000 kg)
- 60,000 lbs (28,000 kg)
- 75,000 lbs (34,000 kg)
- 100,000 lbs SE (46,000 kg)
- 125,000 lbs SE (57,000 kg)

The ML500 is designed for center loading and is ideally suited for large capacity weighing. Common applications include truck, railway track and tank weighing. It is available in nickel plated alloy steel. This quality cell is temperature compensated and completely environmentally protected. Be assured of consistent, reliable, and accurate operation.

Performance Specifications

Safe Overload	150%
Ultimate Overload	300%
Full Scale Output	3mv/V +/- .25% FS
Maximum Excitation	15 VDC
Non-Linearity	<0.03% FS
Hysteresis	<0.02%FS
Non-Repeatability	<0.01% FS
Thermal Sensitivity Shift	0.0008% of reading/°F
Thermal Zero Shift	0.0015% FS/°F
Barometric Effect	NIL
Bridge Resistance	700 Ω
Operating Temp Range	-50°C to +80°C
Compensated Temp Range	-10°C to +40°C
Sealing Standard	IP-67



Capacity	A		B		C		D		E	
	in	mm	in	mm	in	mm	in	mm	in	mm
1K=1000lb										
25K	6.50	165	7.75	197	5.00	127	1.38	35	1.69	43
50K/60K/75K	8.50	216	10.25	260	6.39	162	1.93	49	2.44	62
100K/125K	12.75	324	15.25	387	8.99	228	3.13	80	2.90	74
Capacity	F		G		H		I		J	
	in	mm	in	mm	in	mm	in	mm	in	mm
1K=1000lb										
25K	1.70	43	1.94	49	0.69	18	0.75	19	0.90	23
50K/60K/75K	2.65	67	2.94	75	1.06	27	1.00	25	1.37	35
100K/125K	3.43	87	3.86	98	1.59	40	1.50	38	1.80	46

