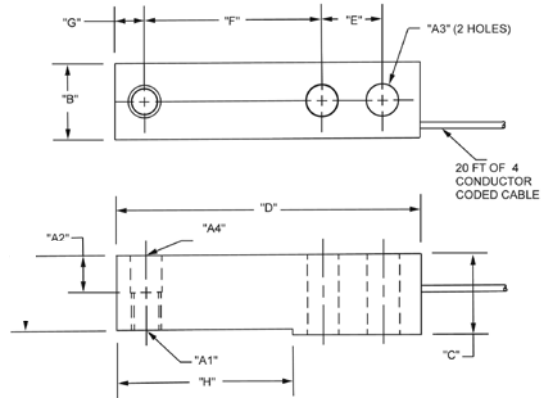


# H35 Single-Ended Beam, Stainless Steel NTEP 1:5000 Class III Multiple Cell, Welded-seal, IP67



Picture is a representation of actual product



## SPECIFICATIONS

**Full Scale Output:**  
3.0 mV/V

**Output Resistance:**  
350 ohms +/- 3

**Input Resistance:**  
>350

**Material/Finish:**  
Stainless steel

**Temperature:**  
Compensated range  
14°F to 104°F/-10°C to 40°C

**Safe Overload:**  
150% Full scale

**Safe Sideload:**  
100% Full scale

**Rated Excitation:**  
10V DC (15V maximum)

**Nonlinearity:**  
0.03% Full scale

**Hysteresis:**  
0.03% Full scale

**Insulation Resistance:**  
5000 megohms

**Seal Type:**  
Welded-seal, IP67

**Cable Length:**  
20'/6.1 m

**Cable Diameter:**  
.190 polyurethane jacket

**Cable Color Code:**

- Green .....+ Excitation
- Black.....- Excitation
- White .....+ Signal
- Red .....- Signal
- Yellow ..... Shield

**Warranty:**  
One-year limited warranty

**Approvals:**



## DIMENSIONS

RATED CAPACITY	A1	A2	A3	A4	B	C	D	E	F	G	H	I
<b>lb/inches</b>												
500-5000	1/2-20 UNF-2B	.62	.53	.53	1.21	1.19	5.12	1.00	3.00	.50	2.85	1.120
<b>kg/mm</b>												
453.6-2268	1/2-20 UNF-2B	15.8	13.5	13.5	30.7	30.2	130.05	25.4	76.2	12.7	72.4	28.4

## ORDER INFORMATION

LOAD RATING	PART #	PRICE
500 lb (226.8 kg)	84818	Consult
1,000 lb (453.6 kg)	64876	Consult
2,500 lb (1134.0 kg)	64877	Consult
4,000 lb (1814.4 kg)	64878	Consult
5,000 lb (2268.0 kg)	64879	Consult

## INTERCHANGEABLE PRODUCTS

MANUFACTURER	PART #
<b>Mettler Toledo</b>	
500 lb-8' cable	TB601019-008
1,000 lb-20' cable	TB601016-020
2,500 lb-8' cable	TB601016-008
4,000 lb-20' cable	TB601017-020
5,000 lb-8' cable	TB601018-008

HBM, INC.