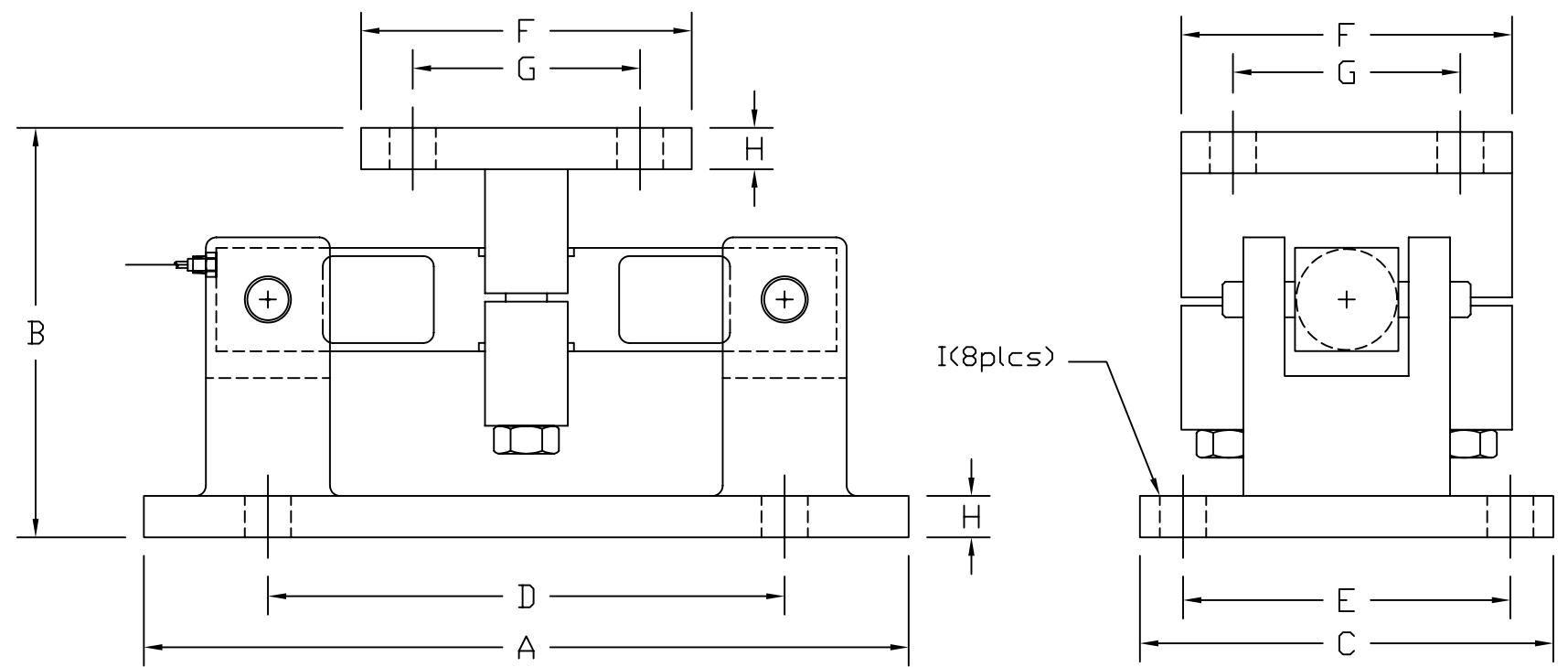


REVISIONS							
ZONE	LTR.	DESCRIPTION	DATE	ECN	BY	CKD	APVD
-	-	INITIAL RELEASE	11/30/06	-	-	-	-
-	A	EDITED NOTES	01/21/08	117	MP	AA	WH

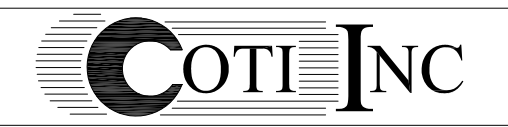


PERFORMANCE SPECIFICATIONS:

- CAPACITIES: 1K, 1.5K, 2K, 2.5K, 3K, 5K, 10K, 15K, 20K, 25K, 35K, 50K, 75K, 100K, & 125K LB
- SAFE OVERLOAD: 150% FS
- FULL SCALE OUTPUT: 3.00 mV/V
- EXCITATION VOLTAGE: 10-15V AC/DC
- LOAD CELL RESISTANCE: 700 OHMS
- LOAD CELL CABLE:
 - 1K-5K: 4 CONDUCTOR, 50 FT
 - 10K-125K: 4 CONDUCTOR, 50 FT (BRAIDED SHIELD)
- OPERATING TEMPERATURE RANGE: -20°C - +60°C
- MATERIAL
 - LOAD CELL: ALLOY STEEL (NICKEL PLATED) OR STAINLESS STEEL
 - ASSEMBLY: MILD STEEL (NICKEL PLATED) OR STAINLESS STEEL

RATED CAPACITY	DIMENSIONS										
	A	B	C	D	E	F	G	H	I		
1K-5K	9.25	5.00	5.00	6.25	3.75	4.00	2.75	0.50	0.56		
10K-25K	12.00	7.90	8.00	7.50	6.00	8.00	6.00	0.75	0.81		
35K	12.00	7.90	8.00	7.50	6.00	8.00	6.00	0.75	0.81		
50K	16.25	9.30	12.00	11.50	9.50	9.00	6.50	1.00	0.81		
75K	16.25	9.30	12.00	11.50	9.50	9.00	6.50	1.00	0.81		
100K-125K	23.50	11.75	14.00	20.00	12.00	10.00	8.00	1.12	1.12		

DO NOT ALTER WITHOUT AGENCY NOTIFICATION



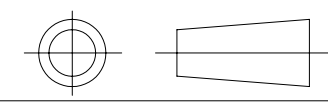
**MODEL CI 16M
TANK MOUNT**

APPROVALS		DATE
DRAWN:	MP	11/30/06
CHECKED:	AA	01/21/08
ENGINEER:	WH	01/21/08
APPROVED:	WH	01/21/08
MATERIAL		
SEE NOTES		

SCALE	SIZE	PART/DRAWING NO.	REV.
NONE	B	DOD-CI16M	A
MODEL CI16M		SHEET	1 OF 1

THIS DOCUMENT CONTAINS PROPRIETARY INFORMATION AND SUCH INFORMATION MAY NOT BE REPRODUCED OR DISCLOSED FOR ANY PURPOSE OR USED TO PRODUCE THE ARTICLE OR SUBJECT WITHOUT WRITTEN PERMISSION FROM COTI, INC.

TOLERANCES UNLESS OTHERWISE SPECIFIED
.XX-±.01
.XXX-±.005
FRACTIONS-±1/16"
ANGLES: ±1/2"



THIS DRAWING USES THIRD ANGLE PROJECTION