



LOAD CELL SYSTEM TESTER & CALIBRATOR - Mod. 1006

FOR THE SIMULTANEOUS MONITORING OF UP TO 4 LOAD CELLS IN ANY WEIGHING SYSTEMS

1 to 4 load cells can be monitored simultaneously !

- ◆ For system diagnosis and service
- ◆ Calibrator function included
- ◆ Supplied with a cable to fit our CEM4-C and CGS-4C summing junction boxes
- ◆ The simultaneous display of each load cell output monitors the entire weighing system, the weight distribution, overloads, bad load cells or bad connections.



Special optional software program allows saving all the weighing parameters for up to 100 different systems in up to 100 different files which can be recalled when needed. The RS 232 communication allows bi- directional files transfer to/ from a computer.

Available display views

Individual mV/V signals from the load cells

| mV/V Signal input | | | |
|-------------------|---------------|---|---------------|
| 1 | 0.7560 | 2 | 0.4360 |
| 3 | 0.3620 | 4 | 0.4460 |

Individual weight values as detected by the load cells

| Weight values | | | |
|---------------|----------------|---|----------------|
| 1 | 2580 kg | 2 | 1680 kg |
| 3 | 1210 kg | 4 | 1700 kg |

Percentage of load on each load cell compared with its nominal capacity.

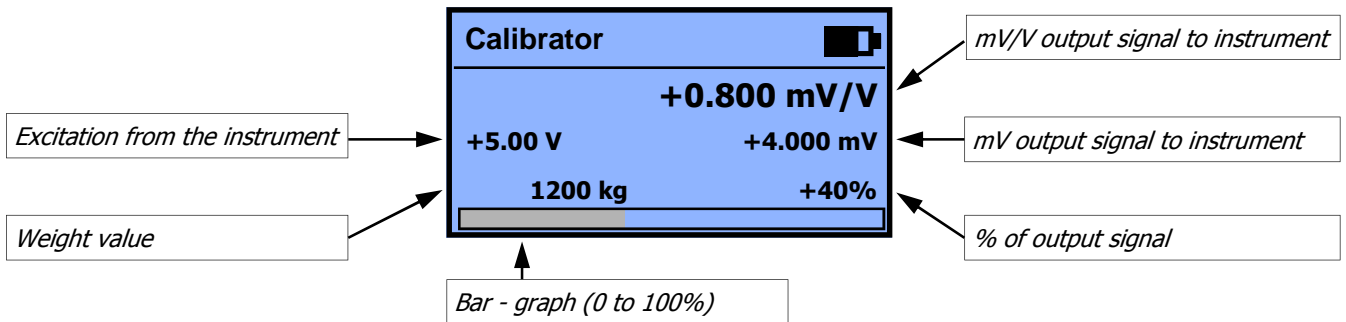
| % of load on LC's | | | |
|-------------------|---------------|---|---------------|
| 1 | 25.8 % | 2 | 16.8 % |
| 3 | 12.1 % | 4 | 17.0 % |

Percentage of load on each load cell proportional to the total weight

| Weight % distribution | | | |
|-----------------------|---------------|---|---------------|
| 1 | 37.8 % | 2 | 21.8 % |
| 3 | 18.1 % | 4 | 22.3 % |

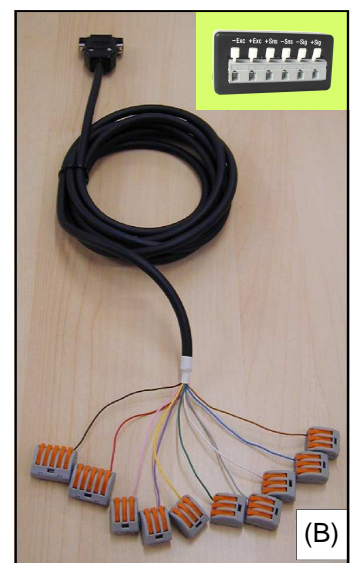
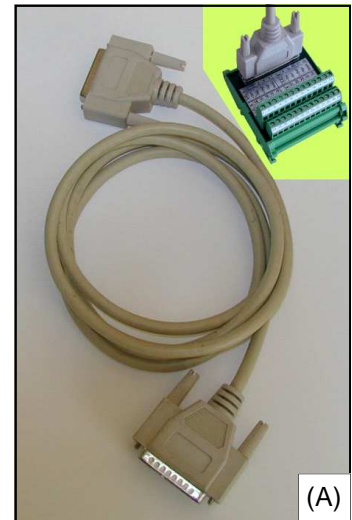
Calibrator function

When the Calibrator function is enabled the LC System Tester acts as a **load cell simulator**. A signal of up to 4 mV/V can be generated and used **to check Zero, Span and linearity of any weighing instrumentation**.



Load Cells Tester - Technical features

| | |
|--|---|
| Power supply | 4 x 1,5V alkaline batteries - AA Size Or: 4 x 1,2V Ni-Mh rechargeable batteries - AA Size |
| Power consumption | Min. 125 mA - Max. 190 mA |
| Operating temperature range | -10°C to +50°C |
| Storage temperature range | -20°C to +70°C |
| Display | Graphic - 3" |
| Keyboard | 16 keys. On/Off switch on keyboard |
| Overall dimensions | 220 x 116/85 x 51 mm. (L x W x H), |
| Weight | approx. 500 g |
| Enclosure | Polyamide (UL94 - V2) |
| Protection degree (front) | IP 54 |
| Load cell connections | Cable (2 mt.) with 25 pin Sub-D (A) Cable (3 mt.) with spring terminals (B) |
| Load cells excitation voltage | 5 Vdc / 60 mA (max 4x350 ohm LC's) |
| 4 individual load cell channels With the following performances: | |
| Linearity | < 0,01% of Full Scale |
| Internal resolution | 24 bit |
| Weight displayed resolution | Up to 50.000 counts |
| Input signal range | -4 mV/V to +4 mV/V |
| Decimal digits | up to 3 |

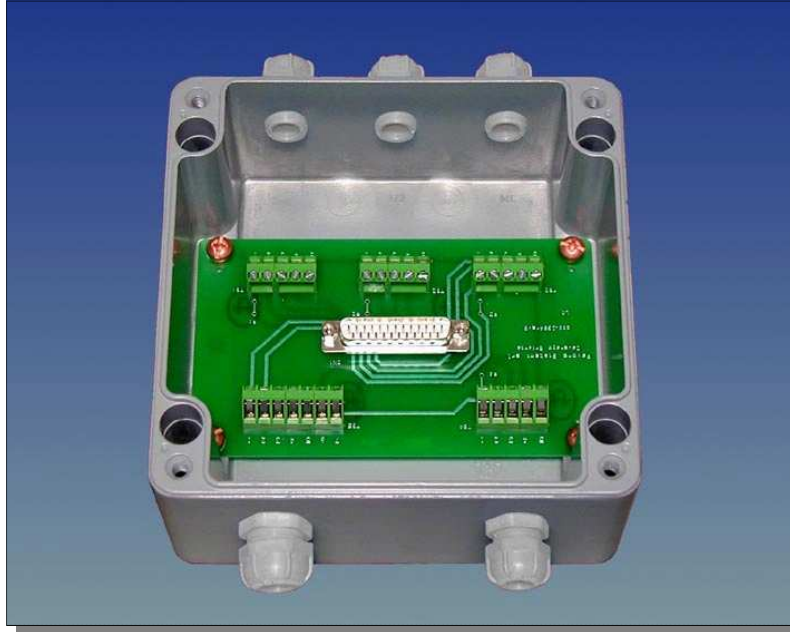


4 CHANNEL LOAD CELL TESTER

**SPECIAL IMPROVED SUMMING JUNCTION BOXES FOR FASTER
AND ACCURATE CONNECTION OF THE 4 LOAD CELL TESTER**

MODEL CGS4/C

Die cast aluminum box IP66

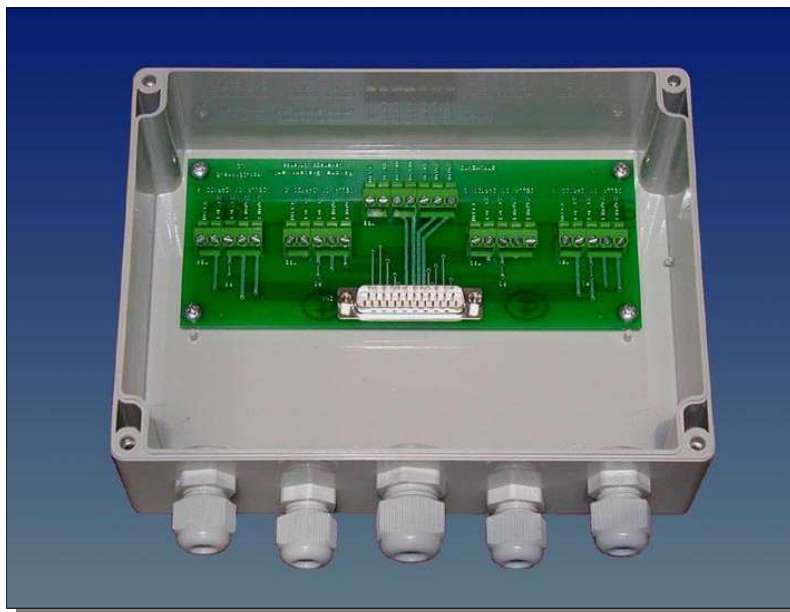


Dimensions: 160x160x90 mm. (LxWxH)

ATEX and Stainless Steel versions available

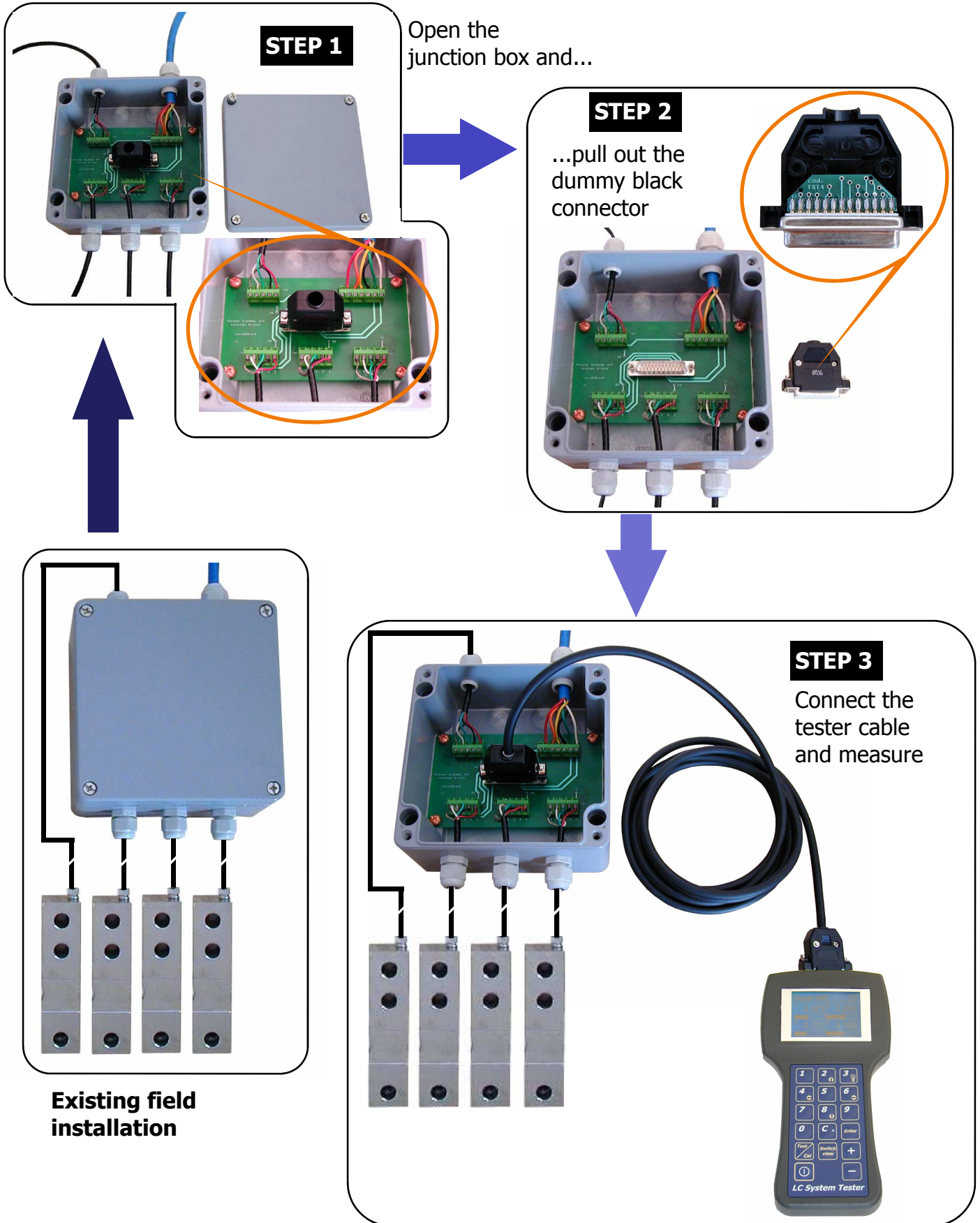
MODEL CEM4/C

ABS Plastic box IP65



Dimensions: 200x150x75 mm. (LxWxH)

LOAD CELLS TESTER FIELD APPLICATION



Disconnect the Tester cable and re-insert the dummy black connector to restore the existing field installation.



Pavone Sistemi

Via dei Chiosi, 18 – 20040 Cavenago Brianza (MI) – ITALY
Tel. +39-02.95339165 - Fax +39-02.9501252
E-mail: pavone@pavonesistemi.it Http: www.pavonesistemi.it