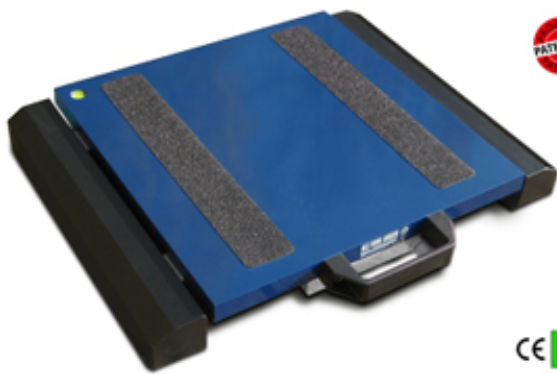
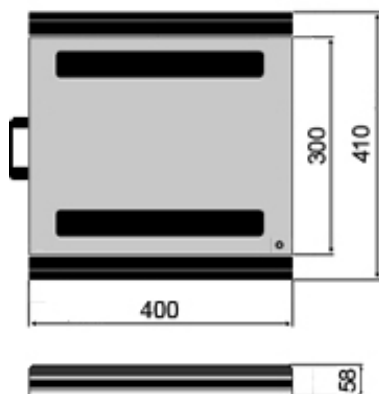


# "WWSB" WHEEL WEIGHING PLATFORMS



WWSB platform.



Dimensions in mm.



Platforms designed for creating weighing stations for small sized vehicles (automobiles, carts, vans, etc.); particularly accurate and sturdy, with attention to details.

## FEATURES

- Platform dimensions: 400x410mm. Height 58mm. Weight approximately 14,5kg.
- Loading surface: 400x300mm.
- Very handy. Sturdy structure, made with special aluminium, which guarantees lightness and makes these suitable also for harsh working conditions.
- Cable with quick connector, platform side.
- 10m cable for connecting the platform to the indicator, complete of connector.
- IP65 aluminium load cells.
- Special vulcanised nonslip rubber applied under the platform, for good grip on all types of surfaces.
- Extremely simple and reliable connection of the scale to the weight indicator.
- The WWS platforms are patented; the number is 1.342.302.
- Available also in CE-M APPROVED version.



## OPTIONS ONLY AVAILABLE AT TIME OF ORDER

- High resolution model for internal factory use.

## NOTES ON THE CE-M APPROVED VERSIONS

- The platforms are for legal for trade use:
  - In the **single-platform systems**, not used to weigh vehicles.
  - In the **wheel weighing systems** (with Dini Argeo indicator) in which the number of platforms is equal to the number of vehicle wheels. The weight of the single platform as well as the vehicle total weight are legal for trade use, since these are obtained with a single weigh.
- **NOTE:** In the axle weighing systems with 2 WWS platforms, the weight is for internal use only.

## Available versions:

Code	Surface (LxP) mm	Max Capacity kg	Division kg	CE-M Division kg	HR Division kg
WWSB600	400x300	600	0,2	--	--
WWSB1500	400x300	1500	0,5	--	--
WWSB3T	400x300	3000	1	--	0,1
WWSB6T	400x300	6000	2	--	0,2
WWSB8T	400x300	8000	5	--	0,5
WWSB600M	400x300	600	--	0,2	--
WWSB1500M	400x300	1500	--	0,5	--
WWSB3TM	400x300	3000	--	1	--
WWSB6TM	400x300	6000	--	2	--
WWSB8TM	400x300	8000	--	5	--

## NOTES:

- The CE-M division is referred to the weight of the single platform.
- The CE-M division in which the sum weight is indicated in the wheels weighing systems (4 platforms) is equal to the sum of the single platforms' divisions, rounded. Example: with 4 approved platforms with division 200g, the approved sum weight will be indicated with division 1kg.

## Main connectable indicators




Code	Description
DFWKRP	<b>Weight indicator</b> in Rack version with specific programme for vehicle weighing, with transport case, 17-key keypad, backlit display, time/date and attached thermal printer.
3590EKR03P	Weight indicator in the "AF03" version for vehicle weighing systems, with printer, transport case, 25-key keypad, LED display and backlit graphic LCD display.
3590EKR08P	Weight indicator in the "AF08" version for wheel weighing systems or axle weighing systems, with printer, transport case, 25-key keypad, LED display and backlit graphic LCD display.

### Options only available at time of order

Code	Description
EHR	High resolution model for internal factory use.
WWSIP68	IP68 protection for WWS platform, with IP68 connector and "anti-rat" PUR cable.

### Main available configurations

Code	Description
CBWWS	Connection cable between WWS platform and weight indicator in transport case (as a spare part). ATTENTION: not compatible with IP68 platform option.

Available indicators	DFWKR	3590EKR03	3590EKR08
			
Specifications	<a href="#">&gt;&gt; Technical data sheet</a>	<a href="#">&gt;&gt; Technical data sheet</a>	<a href="#">&gt;&gt; Technical data sheet</a>
Functions	<ul style="list-style-type: none"> <li>- Wheels weighing</li> <li>- Axles weighing</li> <li>- In/Out (without memory)</li> <li>- Calculating the barycentre</li> </ul>	<ul style="list-style-type: none"> <li>- Vehicles weighing</li> <li>- In/Out (with memory)</li> </ul>	<ul style="list-style-type: none"> <li>- Wheels weighing</li> <li>- Axles weighing</li> <li>- Calculating the barycentre</li> </ul>
Max. reading channels	4	2	4
Max. Platforms	4 (up to 8, 2 per channels)	8 (equalized)	4 (up to 8, 2 per channels)
Visualization	<ul style="list-style-type: none"> <li>- Single channel</li> <li>- Combination of channels</li> <li>- Total weight</li> </ul>	<ul style="list-style-type: none"> <li>- Total weight</li> </ul>	<ul style="list-style-type: none"> <li>- Single channels</li> <li>- Single axles</li> <li>- Total weight</li> <li>- Barycentre</li> </ul>
Printout	<ul style="list-style-type: none"> <li>- Headers</li> <li>- Single channels</li> <li>- Combination of channels</li> <li>- Total weight</li> <li>- Difference In/Out</li> <li>- Barycentre</li> </ul>	Completely programmable	Completely programmable
Databases	-	<ul style="list-style-type: none"> <li>- Customers</li> <li>- Vehicles</li> <li>- Materials</li> </ul>	- Data
Approval	<ul style="list-style-type: none"> <li>- Weight of the single platform</li> <li>- Total weight (only in the wheels weighing)</li> </ul>	<ul style="list-style-type: none"> <li>- Total weight</li> </ul>	<ul style="list-style-type: none"> <li>- Weight of the single platform</li> <li>- Total weight (only in the wheels weighing)</li> </ul>

**AXLE WEIGHING SYSTEM INSTALLATION:**

