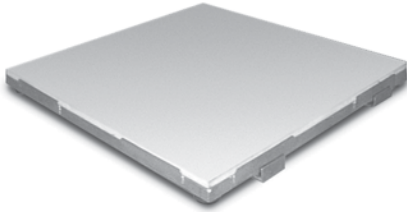


# RoughDeck® SD Sanitary Deck Floor Scale

FLOOR SCALES



*Important NOTE: Applications where oily substances may be spilled could cause the deck to become slippery—caution should be used. The RoughDeck QC is recommended in these instances.*

## STANDARD FEATURES

- Rugged washdown design
- 304 stainless steel construction
- Rigid stainless steel tube frame
- Four stainless steel, welded seal, shear beam load cells
- Load cells protected on all four sides
- 20 ft (6 m) of SURVIVOR® EL147HE hostile environment load cell cable
- Remote TuffSeal® JB4SS stainless steel NEMA 4X junction box
- Four adjustable stainless steel SUREFOOT™ support feet
- Removable polyethylene deck (Deck weight: 80 lb (36.6 kg) on 4 ft x 4 ft size)
- Side brackets to hold deck during washdown

## SPECIFICATIONS

### End Load Capacity:

100% full scale at 2,000 lb & 5,000 lb  
80% full scale at 10,000 lb

### Cable Length:

20 ft (6.1 m) (for connecting junction box to indicator)

### Remote Junction Box:

Stainless steel enclosure can be located up to 10 ft away from scale

### Warranty:

Two-year limited warranty

### Approvals:

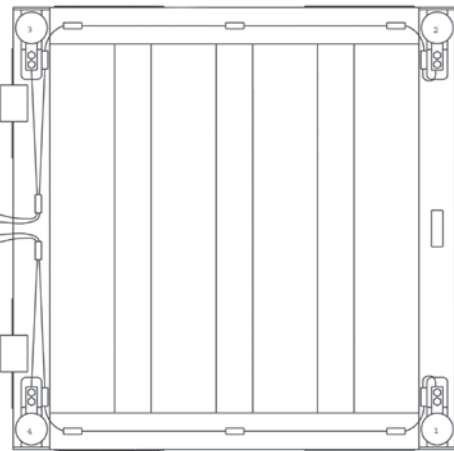
NTEP CC 92-001, Class III 5000d

## APPROVALS

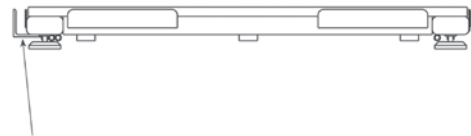


To Remote Junction box

Underdeck View



Side View



Bracket to hold polyethylene top deck when cleaning under scale

**RoughDeck® SD** Sanitary Deck Floor Scale**PART NUMBER/PRICE**

PART #	SIZE (W X L X H)	CAPACITY	EST. SHIP WEIGHT	PRICE
50385	2.5 ft x 2.5 ft x 4.4 in	2,000 lb	158 lb	Consult
50386	3 ft x 3 ft x 4.4 in	2,000 lb	208 lb	Consult
50387	4 ft x 4 ft x 4.4 in	2,000 lb	338 lb	Consult
50388	4 ft x 4 ft x 4.4 in	5,000 lb	338 lb	Consult
50389	4 ft x 4 ft x 5.4 in	10,000 lb	447 lb	Consult
50390	4 ft x 5 ft x 4.4 in	2,000 lb	406 lb	Consult
50391	4 ft x 5 ft x 5.4 in	5,000 lb	406 lb	Consult
50392	4 ft x 5 ft x 5.4 in	10,000 lb	540 lb	Consult
50393	4 ft x 6 ft x 5.4 in	2,000 lb	477 lb	Consult
50394	4 ft x 6 ft x 5.4 in	5,000 lb	477 lb	Consult
50395	4 ft x 6 ft x 6.4 in	10,000 lb	637 lb	Consult
50396*	5 ft x 5 ft x 5.4 in	2,000 lb	478 lb	Consult
50397*	5 ft x 5 ft x 5.4 in	5,000 lb	478 lb	Consult
50398*	5 ft x 5 ft x 5.4 in	10,000 lb	637 lb	Consult
50399*	5 ft x 7 ft x 6.4 in	2,000 lb	705 lb	Consult
50400*	5 ft x 7 ft x 6.4 in	5,000 lb	705 lb	Consult
50401*	5 ft x 7 ft x 6.4 in	10,000 lb	908 lb	Consult

\* Constructed of two pieces of polyethylene to make up the top deck.

**OPTIONS/ACCESSORIES**

PART #	DESCRIPTION	PRICE
28740	RoughDeck floor stand for indicator, 36.3 in high, stainless steel	Consult

Consult factory for these additional options

- Access ramps
- Pit frames